

FAST PROTOCOL

Technique and photographs by
MASSIMILIANO
PETRULLO



Copyright is reserved and may not be reproduced

M.PETRULLO

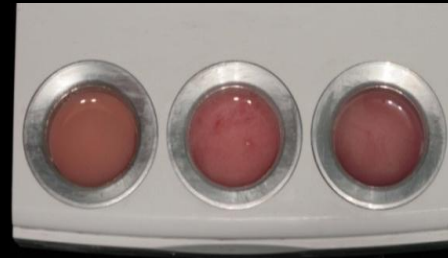
Initiale case



Removal the first plaster teeth
Apply a layer *Al cote* separating agent



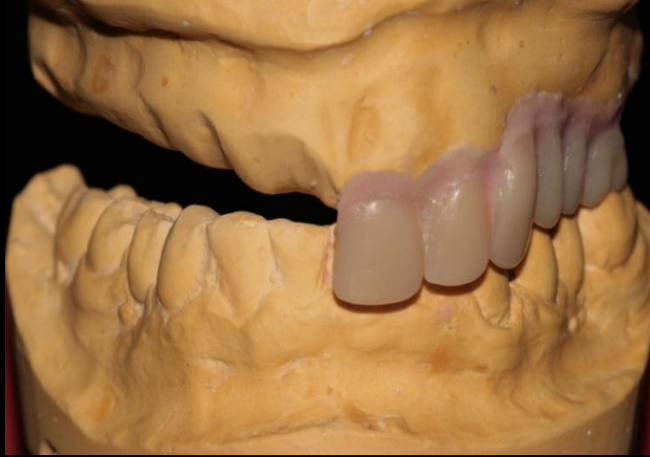
Application on the model *Contour* Preparation resin teeth



Set up the first resin teeth with *contour*



Removal the remaining plaster teeth
Apply a layer *A/cote* separating agent



Application on the model *contour* - Preparation resin teeth (slide 4)
Set the remaining resin teeth (slide 5)



Partial sculpt denture with *contour*
Cure in Eclipse process unit program 2 eclipse



Remount the base in the articulator and check
for accurate positions of the teeth and incisal pin



Apply a layer *A/ cote* separating agent on the plaster discovered
Complete denture with *b . plate*



Apply *Abc*
Cure in Eclipse process unit program 1 eclipse



Remount the base in the articulator and check
for accurate positions of the teeth and incisal pin



Use a pneumatic chisel

Remove the denture bodies from the casts and rough trim with a coarse diamond bur.

Correct any imperfections on the denture

Apply *Abc* to the tissue side

Cure with the tissue side facing the Eclipse process unit. Program eclipse repair / relines

Remove the *Abc* under running water

Finishing and polishing,



Finish the resin denture



Results



It's not how fast you go,
but how you go fast.

